

A Firepit would

be a reason for

Community to come together.

Suggest

~~At~~ Pit size 36-42" in Dia

- Steel + wood benches approx 36  
to 48" away from outside of

Ring.

- Fire wood stored under benches

- I would build for free.

Yvill - 416 538 3325



DO NOT REMOVE  
ANY TREES

NO MATTER  
WHAT!



## Comments - Liz Addison + Mark Fram

- Needs to be 2 bocce courts
- Needs to be a continuous fence around playground - It's a little ambiguous in the pics.
- picnic tables? need new/better tables - different design - movable chairs?
  - north end (on vermont) treated best in the "Art Bench" version
  - ambiguous "separation" of open field between dogs & not-dogs difficult to understand - is it physical or temporal?
  - need a roofed space, not just (open) pergola - perhaps best at B Bolton "café"
  - the "bridge ribbon" scheme in general does the south part of the park well need to keep a natural/forested ambience next to Bill Bolton while still making a nice café zone -



Keep the children's playground fenced!

Safety is a concern!  
This also protects the 8:30 AM  
Chinese exercise space from  
the dogs enjoying the park  
space for off leash useage.

Please keep at least 2 bocce  
courts.

Find parking for Arena staff at St.  
Albans staff to free up space  
near arena & to have safe  
entry at St. Albans.

Set up parking spaces - angle parking  
along Vermont at the north end  
of the park.

Are these plans within the budget?

- bocce ball on Rossmore is great.
- minimal hard surface area if possible in park
- fence around playground a must
- no amphitheatre needed - or minimally invasive -
- community garden? - only if STRONGLY and PERMANENTLY Maintained.
- 2 short paths - ~~near~~ existing + one near park. no more.
- Party for Bill Bolton should be on the street not in the middle of the park.

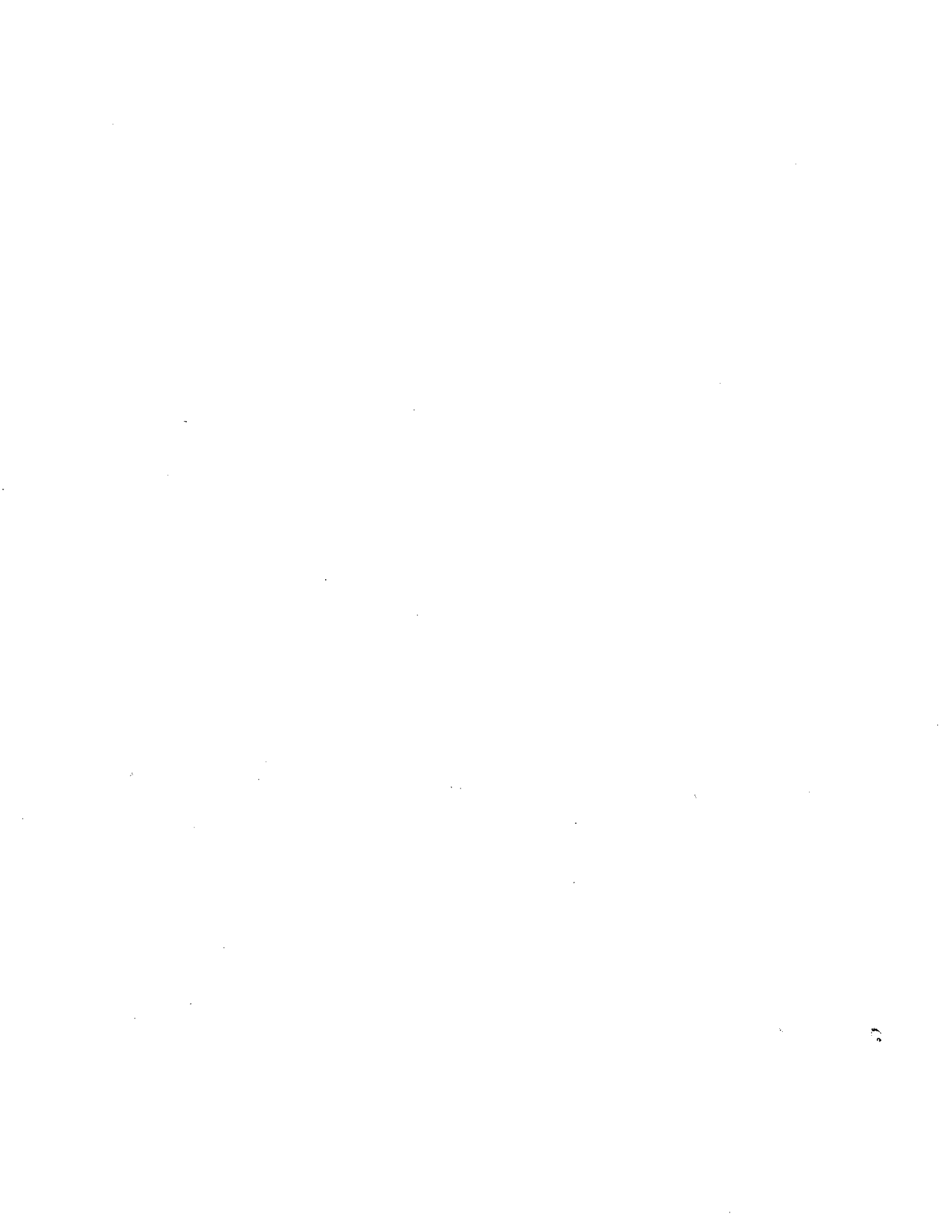
GUERRILLA ART - It should be retained in the park.

The art that is an integral part of benches should stay with (better) benches. The one opposite Palmerston Gdns is particularly good at a park entrance. There should be more guerrilla art.

PARKING - Possibility that angle parking could be put N. of St. Albans off Vermont. It would replace the parking for arena staff and the St. Albans van perpetually parked on the forecourt. It would also serve as pick-up and drop-off for the daycare to relieve the congestion on Palmerston Ave.

OPEN PLAY / DOGS OFF-LEASH - The dotted line between the two is totally unrealistic. ~~My~~ ~~concern~~ The dogs will run through the whole area. Pretending that the off-leash area is only part of the area will cause friction between dog owners (who will not be able to contain their dogs to an imaginary line) and dog haters (who will demand that the dogs are kept within the imaginary line). At the moment the dogs are constrained by the beams.

CAFE - Where is the cafe on the S. side of the arena.



no decoration - we have a very limited  
maintenance money and decorative elements  
need to be maintained

---

instead of the blue pergola in between  
St Albans and Bill Bolton - it would be  
better to cut in some window from Bill Bolton  
in to the alley - real things - not decoration

---

Yes for the  
Cafe' Porch on south wall  
of Bill Bolton.

---

I love Gaudi's bench - we cannot afford  
it or maintain it. leave the ~~relationship~~ relationship  
between playground and field open.

---

move on the back →

important to entrance paths Bill Botter  
separate from the Childrens Playground

---

The existing fence around the playground  
is better than all the proposals

---

We like ~~are~~ park, it works  
very well

I want the cafe' porch  
on the south side of Bill Botter

---

---

I think the overall design is great. I have big concerns about the "unfenced in" dog area. It's a myth the dogs will stay w/in the designated space. If I decide to play frisbee, baseball etc the dogs will still run after ~~them~~ them. Perhaps, we need to compromise to later dog hours in the summer especially. Say, start @ 9 pm. Not sure this would meet with much approval.



Thanks for presenting 3 interesting designs.

My favourite by far is Art Bridge. I think it works the best with what is there, and maintains flexibility of space.

Concerns: the primary concern is the seating / porch on the south wall of Bill Bolton, as a "late night" noisy congregating place. Suggestion - do the "peel off" sidewalk in the "Bridge Ribbon" design and incorporate it into "Art Bridge". I also would try to expand the playground if possible - it is a very busy place.

---

I'm quite concerned by several aspects of the other plans:

- 1) the amphitheatres take away natural play (tobogganing!) + quiet reading space
- 2) I am very opposed to the proposed hard surface area in the NE corner for "Drifting Amphitheatre" - we have enough noise in that section of Rossview Rd. with the

hockey rink and heavy traffic  
without listening to basketballs  
bouncing all evening - this  
would be better located  
south of the B&G Club, in my  
opinion

Yes to some dedicated space  
for teens/preteens to hang  
out - maybe a "climber"  
outside the playground  
fence?

Good luck!

Heather Murray  
37 Roseme Rd.

heather.murray  
@utoronto.ca

PS love the proposed trellis/vines  
on BB east side - we've been  
trying (and failing!) to grow  
stuff there

- We like the Boardwalk
  - We think it would be a fab idea to extend the park all the way to the road and make a pathway through the park
  - have a fenced in area for the dogs at the back of the arena
  - no café *sil vous plait* nor skateboard park (to noisy)
  - like the idea about the painted hard ~~surf~~
  - We think there should be a different section for older age groups
  - plant more trees
  - love the idea about the amphitheater!!!!
  - like the idea about growing vines on Bill Bolton
  - volley Ball courts definite
  - new play structure
  - new monkey bars and flipping bars
  - less chess tables, we think there <sup>are</sup> ~~will be~~ too many being added
  - less sand pits keep them limited.
  - we think it great to have a fore square court.
- thank you  
Elliot and Sara rossmore residents age 12



- There is a lot of information on these plans and it is not easy to understand unless you are familiar with this type of graphic work: Please, let's have a real presentation, however brief, for the next meeting.
- Also, please publicize it better.
- I think there are far too many bits and pieces in all 3 schemes, and no strong central idea.
- Instead of re-designing the entire park, I'd prefer to see ~~a~~ its existing strengths consolidated and re-inforced, and properly maintained.

Positive

- Like the chess orchard ✓
  - painted art. surface that connects to Vermont ✓
  - floating amphitheatre ✓
  - gathering for movies ✓
  - expansion of playground - more organic.
- If you plan to use decorative vines along Kossmore - Be Daring!

Concerned about additional noise that may be created by cafe area. The rink patrons already cause enough noise. Would prefer that a cafe area move to a more central location to diffuse noise. Expanding & enhancing south/west corner a good idea...



## Please remember

- love the idea of using the hard surface as a half basketball court - which can be taken in by St. Alban's at the end of the day.
- remember to keep small children's area completely enclosed - ~~so~~

Way too much stuff going on. We just want the park cleaned up a bit, not a major revamp. It feels like you've just crammed in as much as you could but what is the "grand idea"?



- I like the art bench idea
- I like the idea of a few chess tables.
- Please keep the gontha art (benches, ~~at~~ lights, table) esp. the one by the Playground facing Palm Av.

Hi - Beatrice here!

ps. Doesn't walking a community garden to NE exposure create real challenges for growing anything? Can we put it where there's sun?

- Wonderful ideas. Naturally given my playground concerns, like the "art bench" concept very much. Love the idea of adding colour and curved lines to ~~the~~ the contours of the park.
- Like re-conceptualization of hard spaces - hope we don't add too much concrete to park though
- Like how art bench would keep dog poop from less-responsible dog owners' poodles out of playground. Remember that some dogs love to poop in sandy areas (i.e. re-conceptualized sand play area, if left open).
- Thank you for being so responsive to community regarding under-used spaces along borders of park
- Surface of park under dog/sport area looking VERY sad at moment. Thank you for great ideas!



- northwest corner calls for chess tables and a public garden with picnic tables or benches. Concern would be an increase in ~~noise~~ level at night when the St. Albans programs empty out and the tables are occupied by those departing.

- My initial reaction is that more additions are being built into the plan than concern for retaining the natural simplicity of the park has not been reflected... even though many at the large meeting in the school gym had urged that as a priority.

I shall, however, look carefully at the several scenarios as soon as they are made available on the internet. My comments may be more positive for some of the additions at that point. In particular, good use of presently wasted space on east side of the Bolton area and on the corner of Vermont and Rossmore seem quite positive. Likewise alterations within the small children's playground may well be desirable also.

However, the "chinese wall" that winds west to east midway in the park seems jarring. There should, of course be a fencing of some sort that surrounds the small children's playground that effectively keeps all dogs out and small children in.

I see two problems at south edge of the park.

1. Enlargement of the paved area at corner of Palmerston and Olive will reduce scope for sledding down the knoll by small children.
2. The pathway that is proposed to swing northeast as it approaches the Olive-Rossmore corner will not satisfy the basic need of walkers & riders to take the shortest route to Boardwalk Street.



- Please keep the changes to the park few. Improve the quality of some <sup>of the</sup> existing features and do not <sup>the</sup> feel, comfort and its aesthetic by trying to accommodate new usage. Less is far better than more.
- Wonderful deck & trellis on the south face of the arena with the hope for a future cafe there
- More attractive benches
- Keep the 3 iron sculptures
- Do not <sup>ever</sup> reconsider the logs
- Base court(s) at the eastern edge looks good.
- Please drop the bridge idea & its path across the park. Keep the playground completely fenced
- only one painted surface area and not at Vermont
- no community veg. garden
- amphitheatre <sup>seating</sup> is not needed or desirable
- chess tables <sup>are</sup> a wonderful feature
- Double sided bench may be pleasant if its affordable
- The trellis on the east side of the arena looks very good.
- A stage is not needed at the Vermont parkette



## Vermont Square Park Renewal

- ① Playground - must be fenced in -  
adult/people use it for exercise between  
8.30 & 9.00 AM - stand around the  
~~the~~ wading pool - need an area where  
dogs can not get out. Also, ~~the~~ the  
playground needs to be fenced in to  
keep out the 1-2 year olds inside.
- ② Bocce Courts - should be at least 2
- ③ Dog area - dogs should have been  
run in open areas during off-peak times.

Linda Harris



- I liked the idea of expanding the playground east toward Bill Botton.

---

- Would like to see a 'concept' that shows a minimalist approach
- no amphitheatres or seating built into berms
- chess tables are great - but I don't think we need as many as are shown
- playground needs to be fully enclosed
- Please don't cut back any of the berms
- Dog off-leash should be maintained -  
+ the City needs to enforce the hours by sending an enforcement officer to give out tickets in the middle of the day.  
Signage needs to be improved.
- hard surface play area is good.
- Good idea to create more of a barrier from the road on the east side of the park



Isaiah Wiles, Age 16.

The middle of the Field / Dog area is identical in all 3 plans; No changes or improvements are being brainstormed.

This area is notoriously undergrown. The Field has been replanted many a time, to no avail.

I have spent my entire childhood in this Vermont square park, and the playground holds many memories. I sincerely hope the voices of children are heard in which concepts of a playground ~~they~~ enjoy. I have some suggestions.

Tire swing

curly tube slide

double story wooden Adventure playground

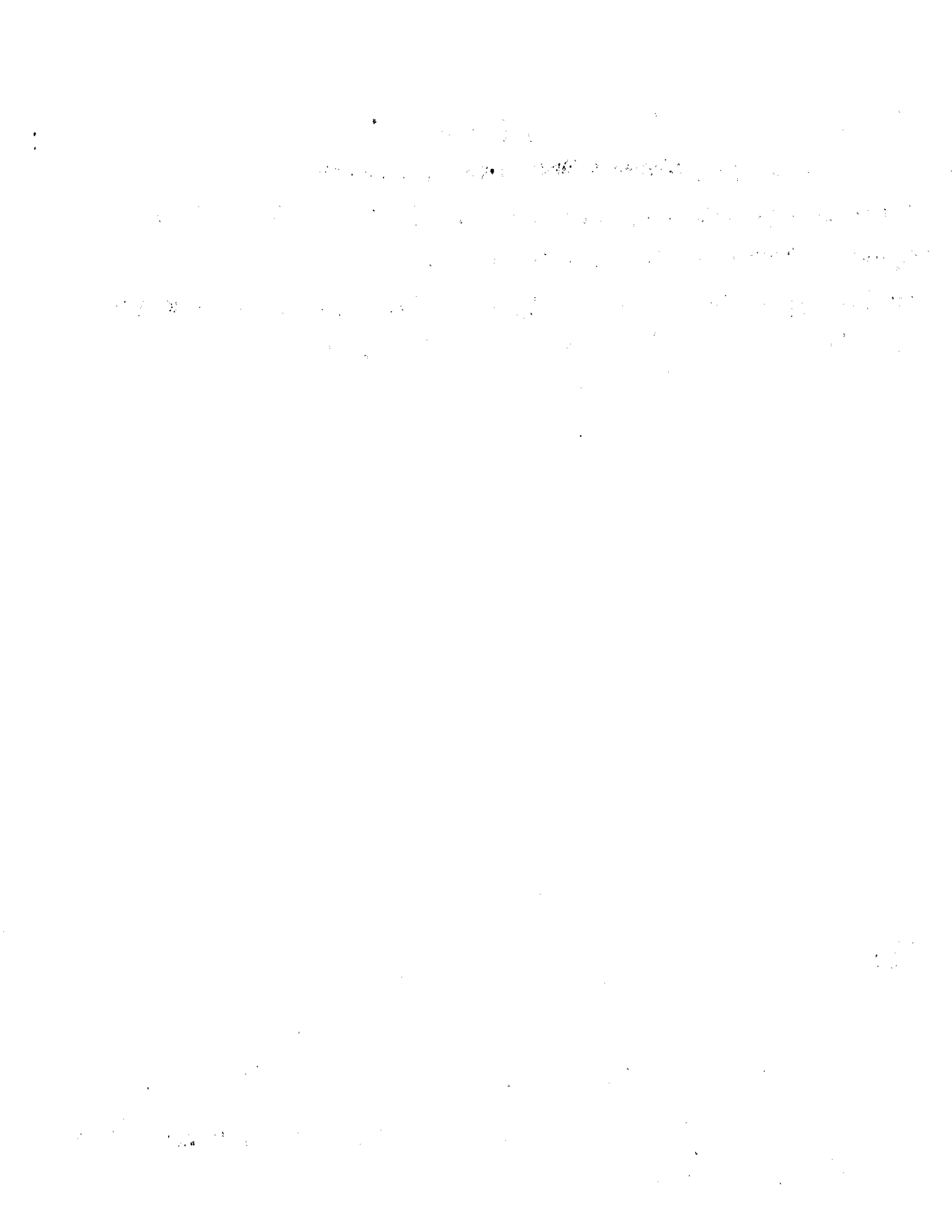
Swings

Benches.

I also believe that more seating should be installed to instill a sense of community.

~~MM~~ <sup>But</sup> The --- line to designate dog area won't work - Please keep the off leash dog area. At present dogs (at two designated off leash times) do generally seem to stay inside the terms (which act as a loose, informal boundary). Please keep it this way!

Enforcement is needed to prevent dogs from running free at other times



- fence needed to keep children safe, parents relaxed and dogs out.
- concerned about late night use of chess areas/picnic benches at the N/W corner (Palmerston + Vermont)
- concerned that pergola between buildings will be too inviting particularly ~~is~~ at night. Area was often used as a toilet for homeless some years back but bright light + concrete have kept it safe and clean.
- love the amphitheatres on berms
- + garden concepts at south corners.
- bocce courts along Rossmore okay.
- love art bench idea.
- Please keep or incorporate the old lamp post N/E corner area.
- like idea of daycare playground expanding these boundaries across the north end toward Palmerston - nice if the had some green space enclosed too.
- concerned with covered area/cafe as a place to congregate - area drop-off is already busy + noisy 7am - 11pm!



## NOV. 17<sup>TH</sup> MEETING NOTES

- THE NOTION OF INTEGRATING THE ARENA, THE BOYS AND GIRLS CLUB AND THE PARK IN GENERAL IS AN AMBITIOUS AND WORTHY PURSUIT. I SUGGEST AN EMPHASIS ON LIGHTING AND SAFETY AS A WAY TO ASSUAGE ANY OPPOSITION. THE UNIQUE USERS OF THIS BLOCK COULD BE SOFT INTO A STRONGER COLLECTIVE WHICH WOULD BENEFIT THE COMMUNITY IN INNUMERABLE WAYS.
- THE "ART BENCH" IS A VERY CONVINCING CONCEPTUAL SCHEME WHICH COULD SPAWN MANY POSITIVE SHOTS.

LESLIE ENDES.

- Enclosed play area better for kids - safer + kids play more freely, also offers clear separation for dogs.
- benches near paths facing each other for conversation + accessibility for people with mobility issues eg, canes, walkers.

MAUREEN McEAY



- No hard surface - it'll be too hot and there is <sup>hard surface everywhere - keep it green</sup>
- please no pergola - it <sup>→ waste of money</sup> will make an already claustrophobic area more so - also danger in winter with falling ice -
- ~~don't use hard surface~~ ~~no basket~~ ~~no ball court~~
- ~~no st. Allen~~ ~~bring in the net at night~~
- I adore the porch on the end of Bill Bolten
- let some paths occur naturally - keep current path system - tweak it to make it accessible
- Love the snaking ~~on~~ two sided art bench - ~~running~~ running alongside the enclosed children's play area + hard play surface.
- Love the tire snake
- keep community garden
- good like the Rope climber active equipment
- + add equipment for ~~pre~~ pre teens + ~~teen~~ teens.
- No amphitheatre seating on the hills - it will block natural hill use
- ~~like~~ <sup>yes to</sup> 2 chess areas

- ~~no concrete bench but yes to sidewalk~~  
add benches that ~~are~~<sup>are</sup> transparent - use existing fence
- no rubber surface → too hot + maintenance costs.
- leave fences as they are.
- like movie space but its a waste of money  
that area is fine as it is
- no raised bridge
- accessible 10x12" 4x5 foot  
community board

## > thoughts

- interconnection of buildings + spaces (play) works well especially in Concept I
- re-check trees, a lot of trees have been removed from site that are in good condition.
- drop stage in NE corner better to have an open multi-use space
- keep existing limestone pathway don't alter path at SE corner. (with gdn)
- no need for entry point at SE corner  
Keep + enhance at SW corner
- reduce community gdn size
- problem... need easy access to west side of Bill  
Bolton area for maintenance vehicles, tank delivery, etc  
Staff need 2 parking spaces
- minimize what's done ~~on~~ in the park
- enhance children's play ground (keep fenced in to reduce conflict with dogs)
- create place for older children, adults close by but separate.



Hard Surface Area will be terrible in the summer - south west exposure no trees.

Also expanding this area will require removing a much loved tree that most neighbourhood kids have learned to climb on.

- No rubber play surface find another way to make it accessible.
- Playground must be enclosed with a transparent iron fence there is nothing wrong with the existing fence.
- New Paths not required wasted money. certainly not expensive ones.
- Good play structures simple is better.
- No more Hard Surfaces !!
- No covered walkway between the buildings
- Open a huge window to Bill Bolton arena
- to make this feel safer.
-



The cafe is a great idea!



~~Are~~ Maintenance costs built into this budget or the Parks & Rec. annual budgets?

Water-sand play in kids playground wld. be great,

We want the Cafe!

